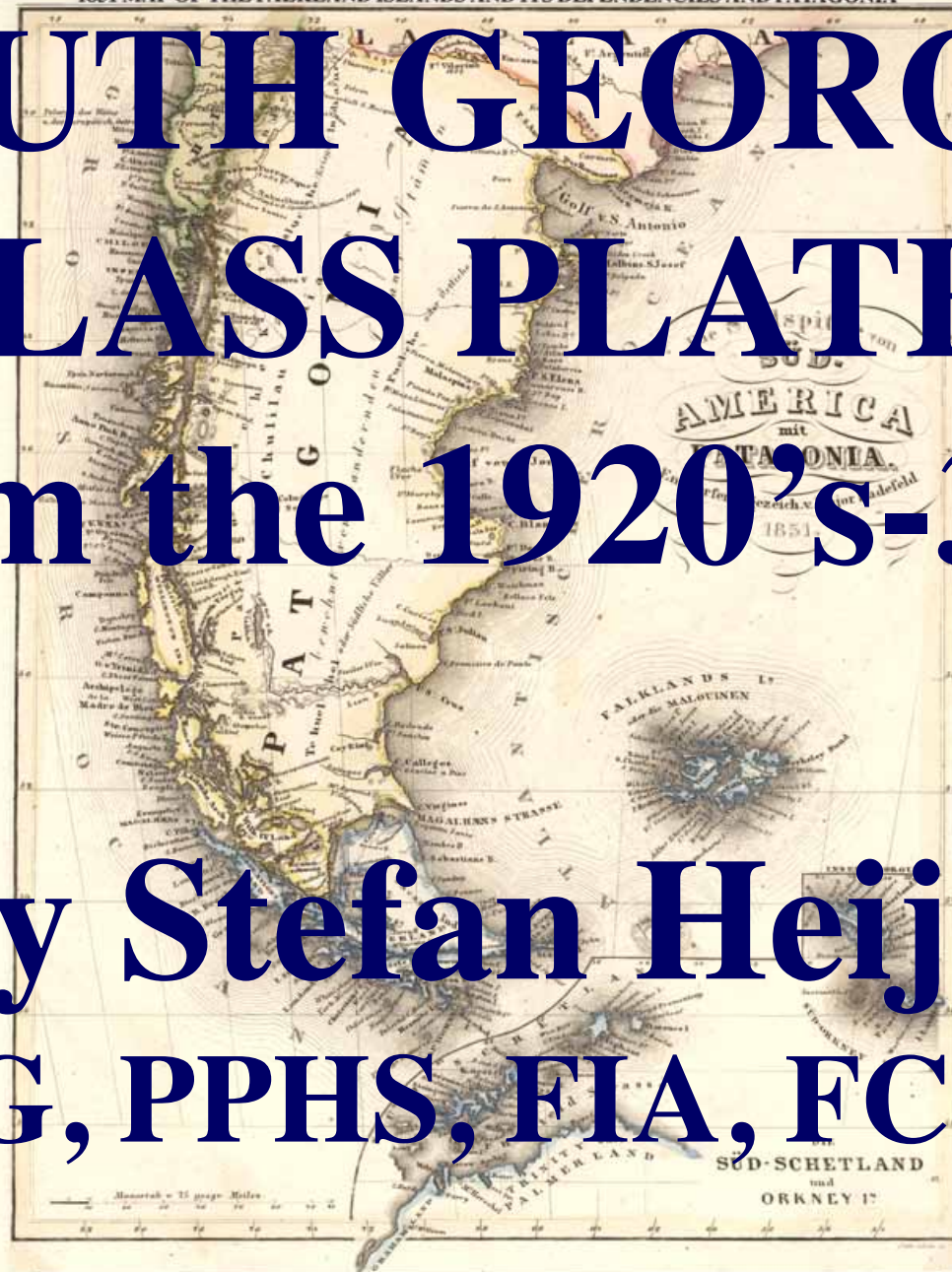


SOUTH GEORGIA GLASS PLATES from the 1920's-30's

By Stefan Heijtz
FIPSG, PPHS, FIA, FC, SGA





RRS Discovery II











Football match, possibly at Leith









RRS William Scoresby



SS Ernesto Tornquist & hulk Louise



Whale catcher, possibly Petrel







The crew of RRS William Scoresby











RRS Discovery II



Whale catcher Narval









Edward Binnie (Magistrate) and his wife

















Secretary Leif Foug, Manager Carl Lange(?), Magistrate Edward Binnie



Secretary Leif Foug, Manager Carl Lange(?), Magistrate Edward Binnie











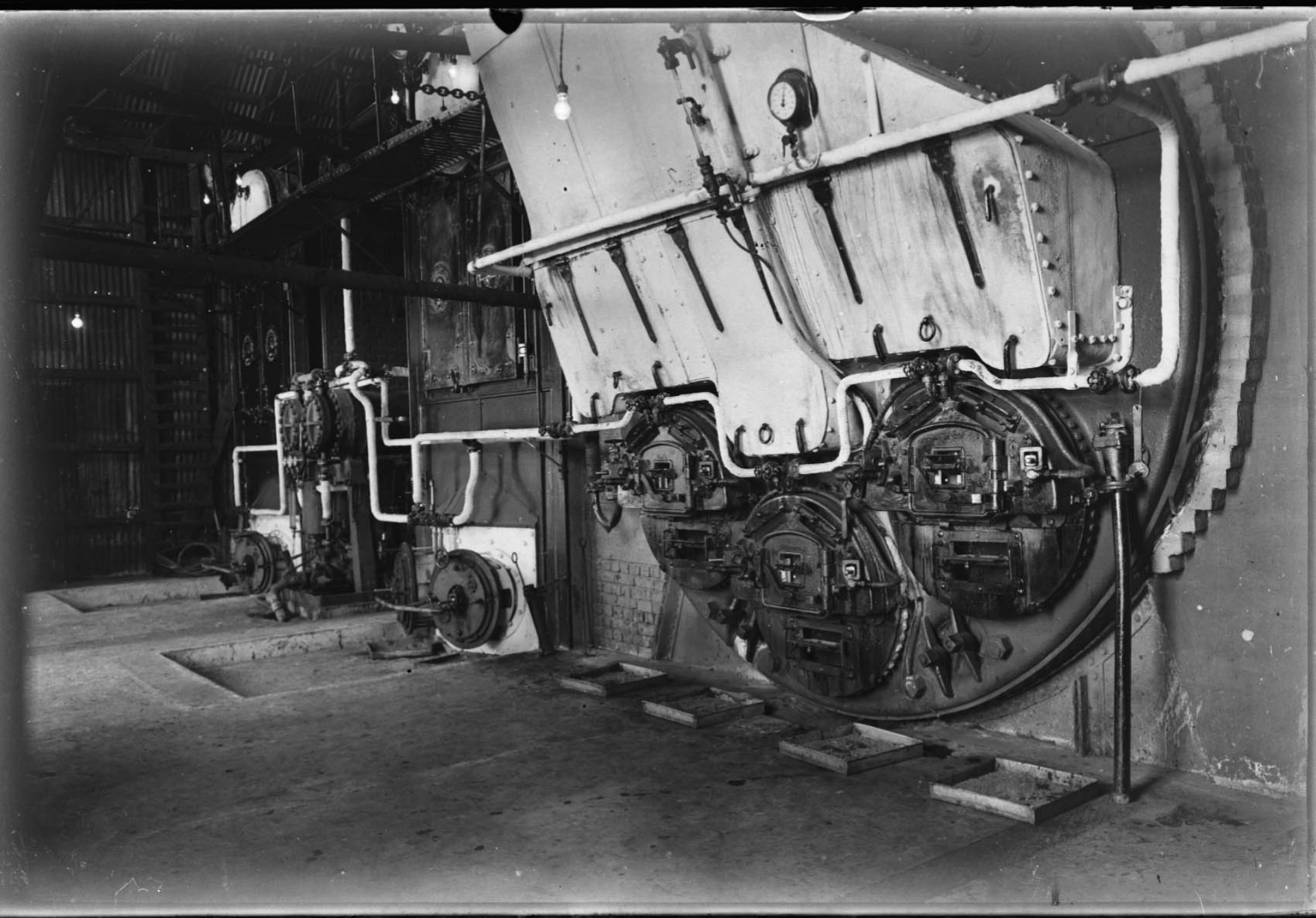


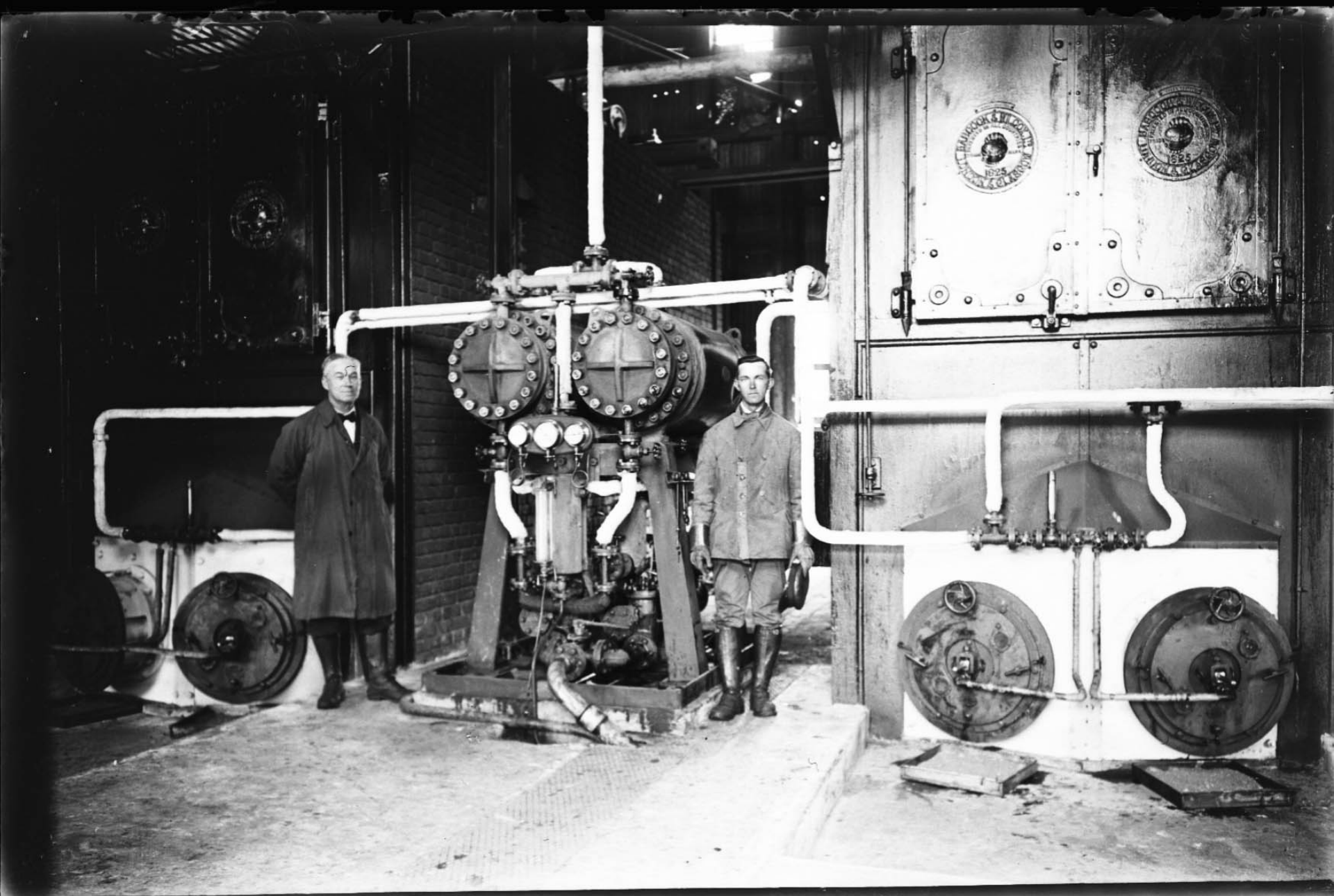






Football match, possibly at Leith





Manager Carl Lange(?) & Magistrate Edward Binnie





Long jump, possibly at Leith











Whale catcher Lille Carl(?)

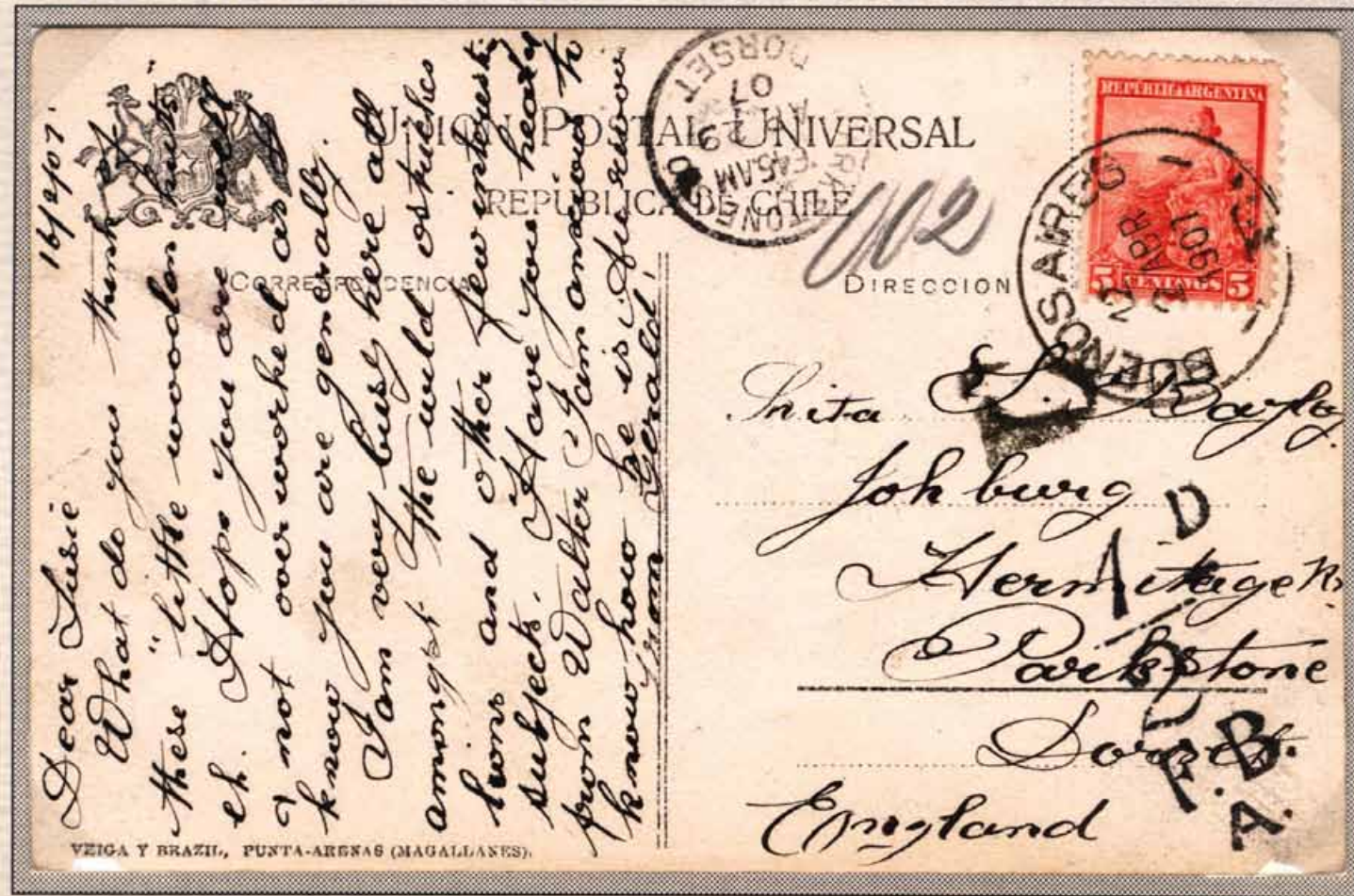




FROM THE SOUTH GEORGIA EXPEDITION BY. E. SWINHOE

Grytviken in 1905, one of the earliest photos of the whaling station

1907 POSTCARD FROM SOUTH GEORGIA TO ENGLAND VIA BUENOS AIRES



COMMENT: THIS IS ONE OF THE EARLIEST KNOWN items sent from South Georgia, almost three years before the establishment of a Post Office.

The card shows buildings at Grytviken and bears a cachet "FROM THE SOUTH GEORGIA EXPEDITION BY E. SWINHOE". It is dated 16.2.07 and mentions: "What do you think of these little wooden huts. I am very busy here all amongst the wild ostriches, lions and other few interesting subjects.". Ernest Swinhoe was manager of the South Georgia Exploration Company which leased South Georgia from 1 July 1905.

An aerial photograph of a coastal town in a winter setting. The town is nestled on a snowy slope, featuring a mix of residential houses, industrial buildings with smokestacks, and several large cylindrical storage tanks. A prominent church with a dark steeple is visible in the lower right. The town's edge meets a frozen body of water, where a large sailing ship is anchored. In the background, rugged, snow-covered mountains rise against a pale sky. The text "THE END" is superimposed in the center of the image.

THE END