

# FALKLAND ISLANDS

Forgeries and Fakes of  
Stamps, Surcharges and Postmarks

# THE BLACK FRANK



Forgeries



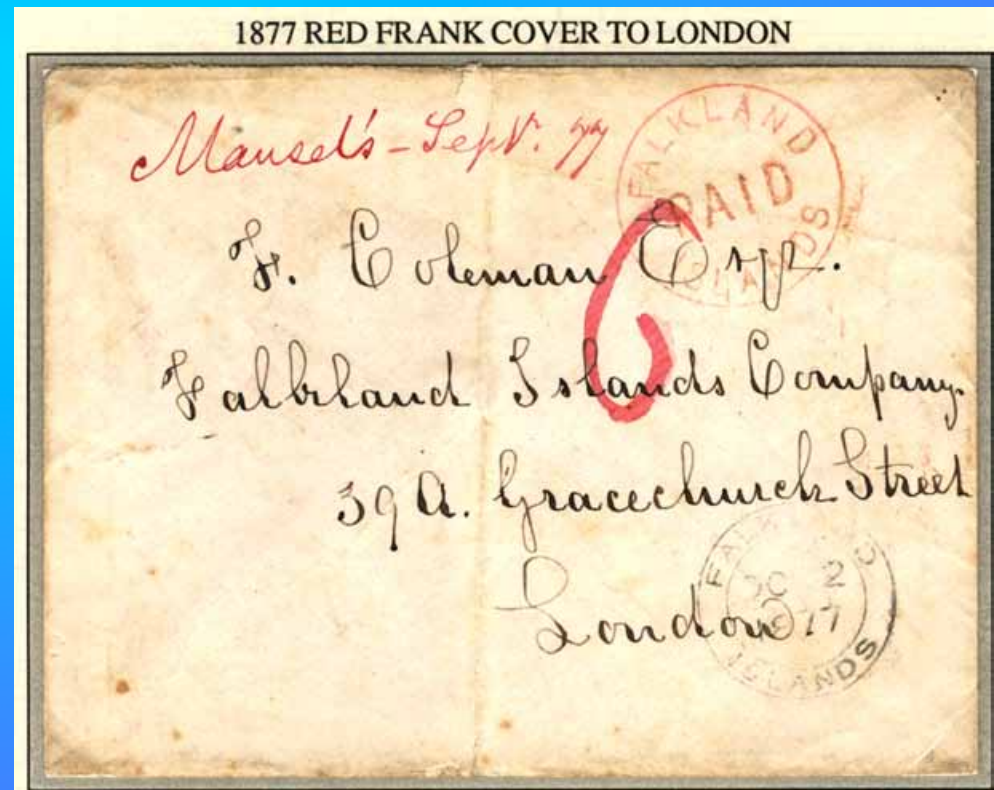
Genuine

# THE RED FRANK

Forgery



Genuine





# THE FIRST STAMPS

Forgeries



Genuine



# 1891 BISECTS



Posthumous  
Large full stop



Posthumous  
Broken "2"



Forgery

Genuine





# QV HIGH VALUES

Forgeries



Genuine



# WAR STAMPS

Forgery



Genuine





# 1923 BISECTS



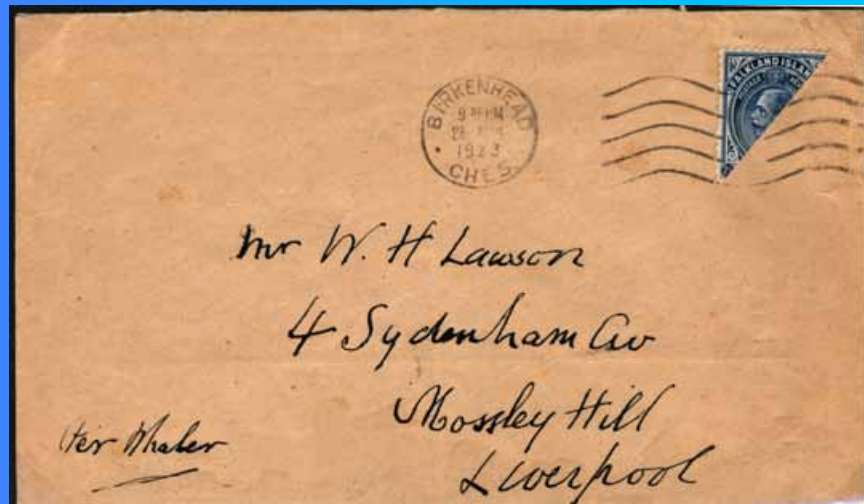
Forgery



Forgery



Backdated



Genuine



Genuine





# 1928 PROVISIONAL SURCHARGE



Forgery



Genuine



Genuine with  
Partial double

Double surcharges:



Forgery



Forgery



Genuine



# 1935 EXTRA FLAGSTAFF

Forgery

Genuine





# MARYLAND FORGERIES (with genuine stamps for comparison)





# STEEL "F.I." OBLITERATOR



Forgeries



Genuine



# FALKLAND ISLANDS CDS TYPE F.4

Small code letter



Without crosses



Madame Joseph 148



Madame Joseph 149



Genuine but backdated examples



Forgeries &  
backdated

Genuine



# PORT STANLEY CDS TYPE PS.1

Without crosses



6.JA.33 Malformed letters



Genuine

Month 3 letters



No code letter, small letters



Forgeries



# 9409 ISLAS MALVINAS CDS



Forgeries



Genuine

# WFI OBLITERATOR & WEST FALKLAND CDS



Produced at a later stage

Original genuine



Backdated



Genuine



Bogus



# FOX BAY CDS



Forgeries



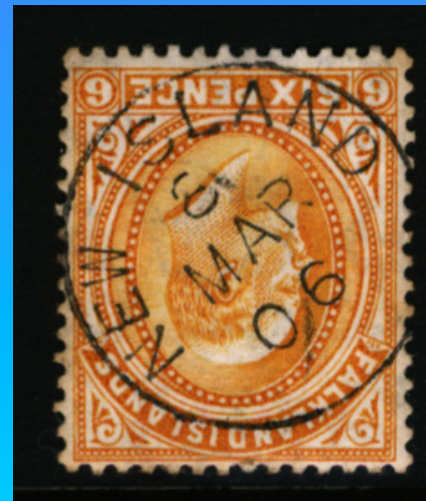
Genuine

# NEW ISLAND CDS



Forgery

Genuine

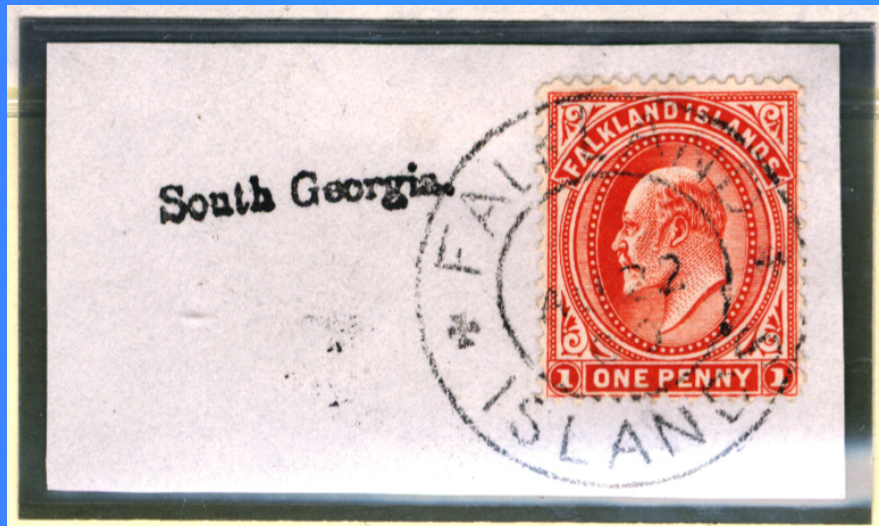


Forgery



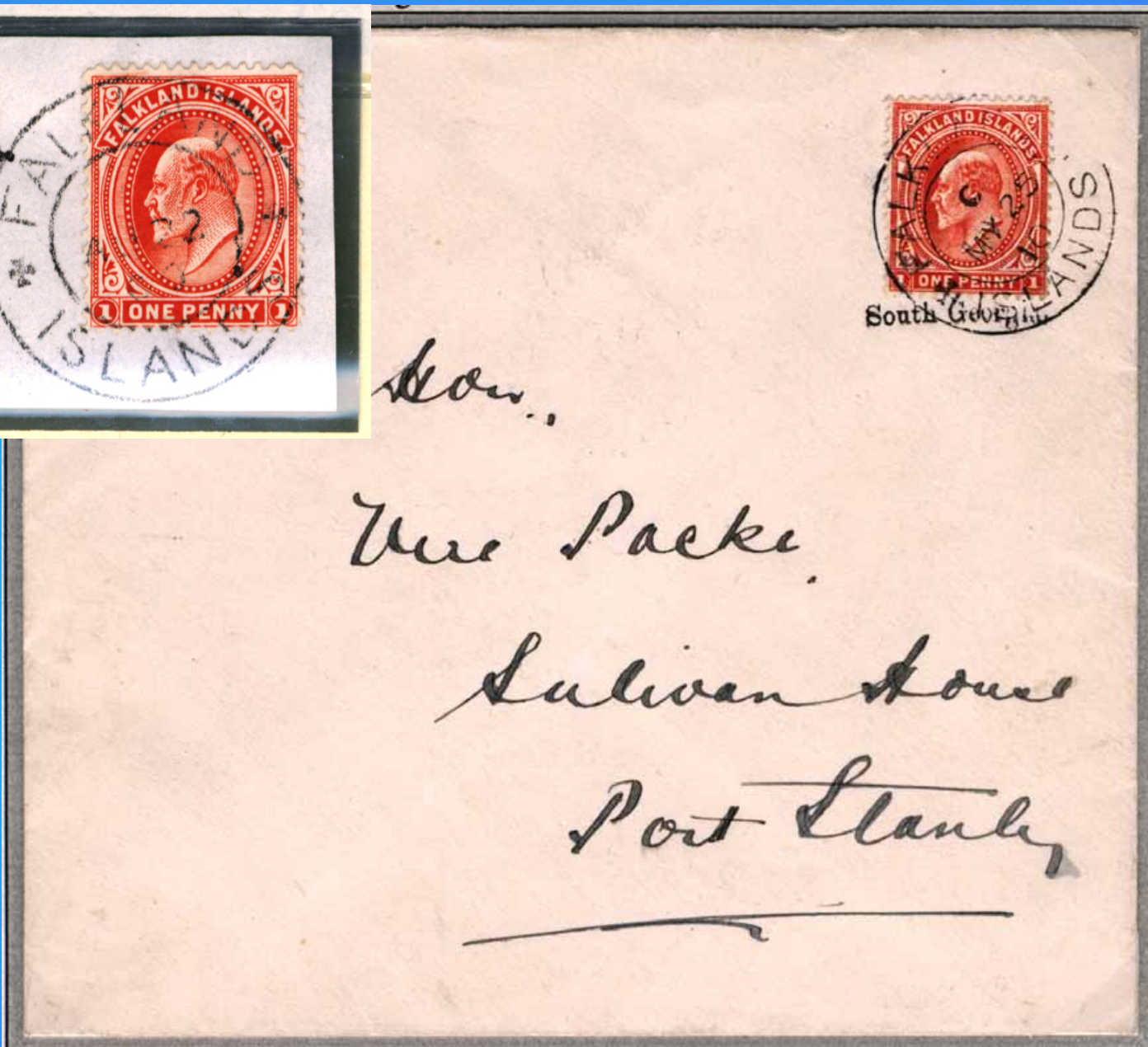


# "South Georgia." IMPRINT



Forgery

Genuine



# SOUTH GEORGIA TYPE SG.1

152

Forgery



Wood

30-8-1931



Genuine



# SOUTH SHETLANDS TYPE SS.1



150

Wood

20-3-1927

Forgery



Genuine

# MADAME JOSEPH FORGERIES

MADAME JOSEPH - FORGED POSTMARKS

## FALKLAND ISLANDS

